

# Outdoor Learning Programme

## Welsh Harp Environmental Education Centre

Learning outside the classroom through hands-on experience is one of the best ways for children to gain a greater understanding of the natural world. Our unique outdoor educational programme allows children to explore and discover their role in creating a healthy environment for people and wildlife.



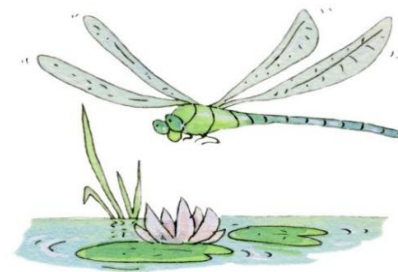
*Did you know there are 5.5 hectares of woodland, 2 ponds, a stream, 2 classrooms and free parking at the Centre?*

*I might move in!*



Through interactive sessions we provide children with practical opportunities to get involved in curriculum subjects and deepen their understanding of the environment, all while developing their skills, resilience and confidence. Read on for details of memorable sessions for Early Years Foundation Stage - Key Stage 2.

# Early Years Foundation Stage Nursery & Reception



The education centre is a stimulating place for young children to explore freely in nature. The following sessions are designed to last up to 2 hours. We can include a break or shorten the time as required, and if you want to make a day of it just let us know.

## Woodland Adventures with Timmy the Mouse

Explore the woodland following the trail of Timmy the Mouse, developing literacy and numeracy skills in this exciting adventure. Find Timmy's home and discover what he likes to eat by hunting for mini-beasts.



## Marvellous Mini-beasts

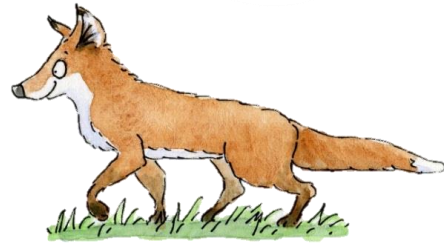
Discover the wonders of the mini-beast world by dipping a net in our pond and exploring the woodland. See what creatures live there, count their legs, observe how they move and learn how they breathe.

## Nature Crafts

A nature based craft activity can also be incorporated into your visit, please ask us for more information.

# Key Stage 1

Our programme covers areas of the English and science curricula, many activities also incorporate numeracy.



## Words in the Woods (2 hours)

Pursue this story making quest filled with fun and inspiration by following the woodland trail. During this session children will explore to discover mini-beast characters and signs of larger wildlife. They will develop the foundation for a story to be continued back at school.

## Brilliant Botanists (2 hours / full day)

Become a junior botanist by identifying a variety of plants around the woodland and meadow including deciduous and evergreen trees. Your class have the option to plant their own seeds to take back to school or stick parts of plants onto butterflies.

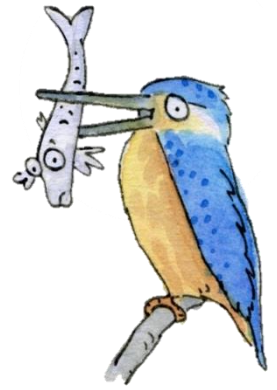
## Amazing Animals (2 hours / full day)

Investigate the abundance of wonderful wildlife living at the education centre through pond dipping and mini-beast hunting. Learn the creatures' names, how many legs they have, their habitats and what they eat.



## Key Stage 2

Science, history, literacy and numeracy are all brought to life through the following sessions.



### Sticks, Stones & Fossilised Bones! (full day)

Junior geologists will enjoy a day of exploring how rocks and fossils were formed through fun science experiments, including making a volcano erupt! They will work scientifically to explore the properties of different types of soils.

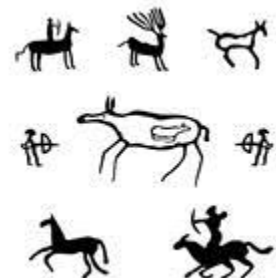
### Brilliant Botanists (2 hours / full day)

How do seeds travel around the environment? How do plants grow and thrive? Pupils will deepen their scientific understanding by looking seed dispersal and pollination while exploring our woodland habitat, visiting the resident honey bee hives and peeping inside a model hive. They may even get to taste the local honey!

### Stone Age Survivors (2 hours / full day)

Travel back in time for a hands on experience of living in the Stone Age. Pupils will become immersed in the woodland habitat as they undertake a trail of activities which focus on:

- hunting and gathering;
- communication games;
- building mini stone age shelters;
- creating a cave painting;
- fire lighting demonstration where they will learn how to use a flint and steel.



## Key Stage 2

### **Water Woes** (2 hours)

Pupils will become water scientists in this session of discovery about the effects of pollution on our natural waterways. They will learn about what pollutes our rivers, how to test water quality using a simple scientific method, and compare the health of the Kingsbury Brook with our pond.



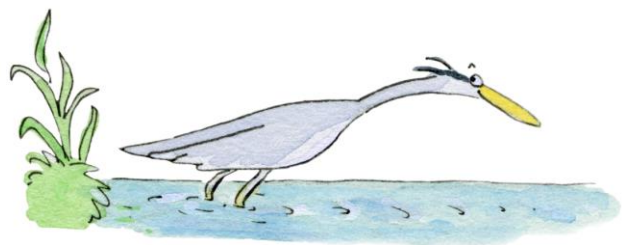
### **The Circle of Life** (2 hours)

Discover amphibian and honey bee lifecycles by pond dipping and seeing real bee hives in action in the woodland. Pupils will also have the opportunity to explore the inside of a model bee hive for a more in depth view of the secret life of honey bees.

### **Classy Creatures** (2 hours / full day)

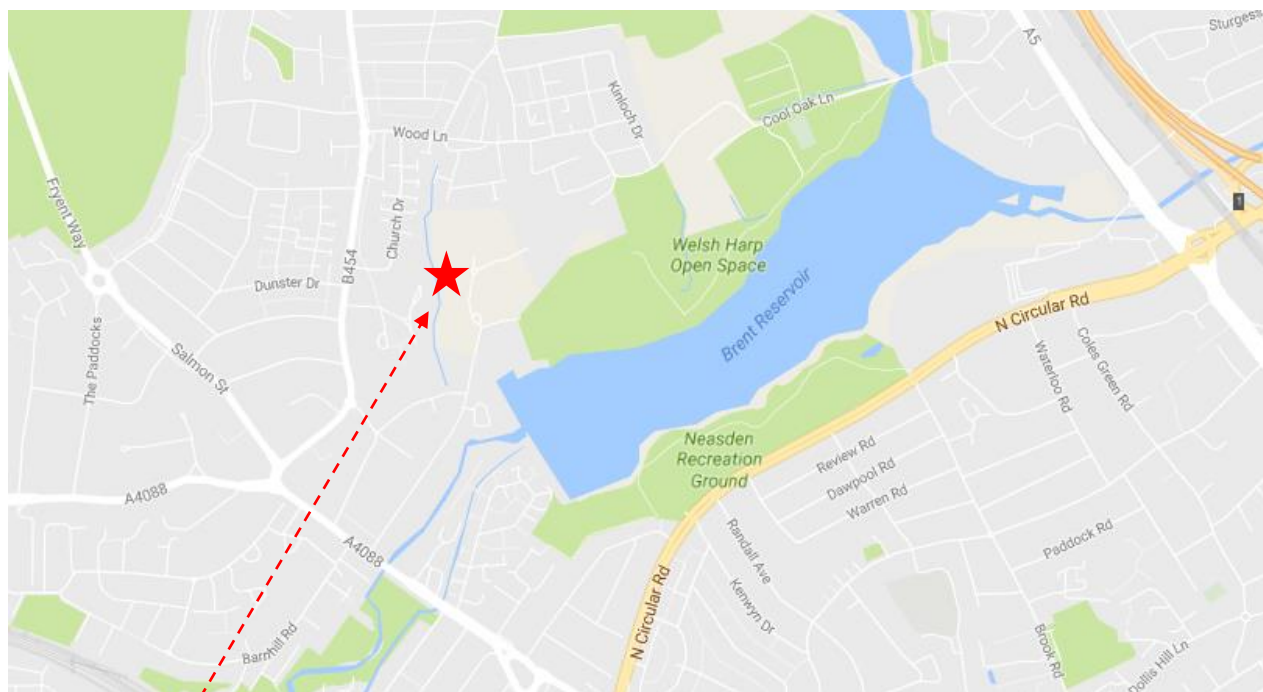
Pupils will get up close and personal with nature. They will identify the common wildlife found during woodland invertebrate investigations and pond dipping, looking more closely at classifying arthropods based on shared characteristics and differences

- We can adjust our sessions to suit other year levels and if you have a suggestion for a new activity we're keen to hear it! For a full day experience, many 2 hour sessions can be combined. ▪





# Directions, costs and how to book



## Address:

Welsh Harp Environmental Education  
Centre, Birchen Grove, London,  
NW9 8RY

## Cost per session, up to 30 participants:

Half day: £130 ■ Full day: £230

To create a bespoke full day experience  
half day sessions can be combined or  
additional activities included on request.

## How to book:

Ph: 07711 701 694

E: [welshharpcentre@thames21.org.uk](mailto:welshharpcentre@thames21.org.uk)

## Buses:

83, 182, 245, 297, 302 pass within a  
ten minute walk of the centre.

## Driving to the centre:

Birchen Grove is a minor road off  
Blackbird Hill Road with traffic lights at the  
junction. Follow the signs to the garden  
centre, we share their drive. Drivers  
should stop in the car park, not on the  
drive. Please take extreme care when  
driving in the Centre car park.

